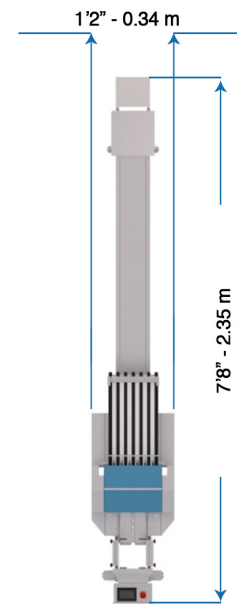
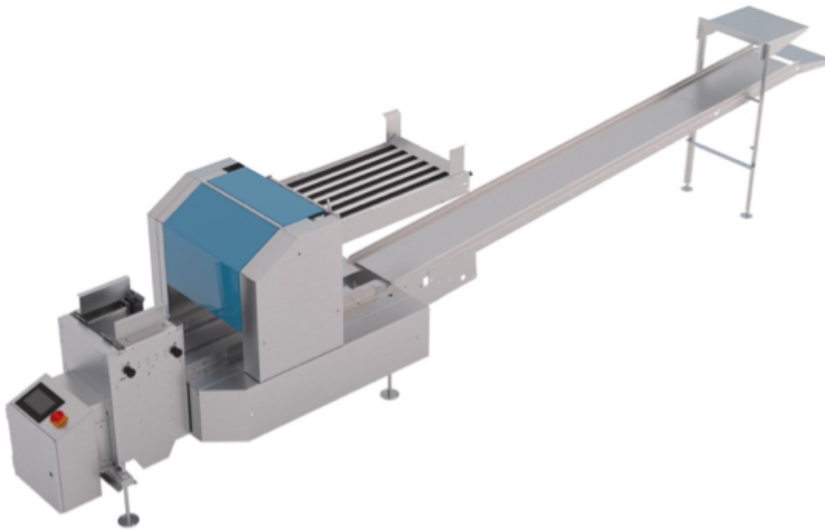
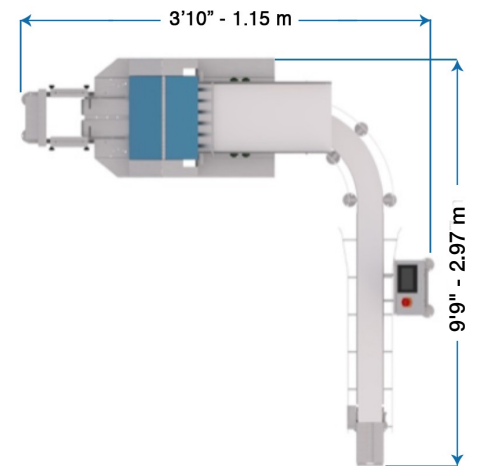
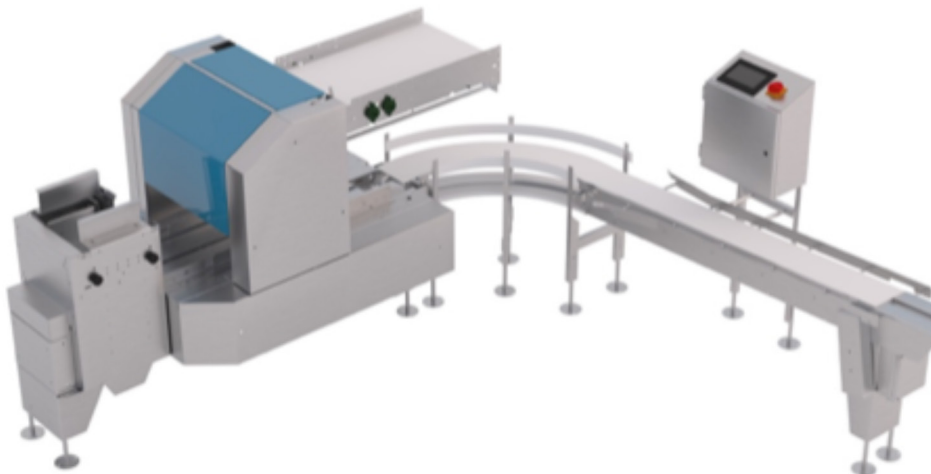


Model GP One

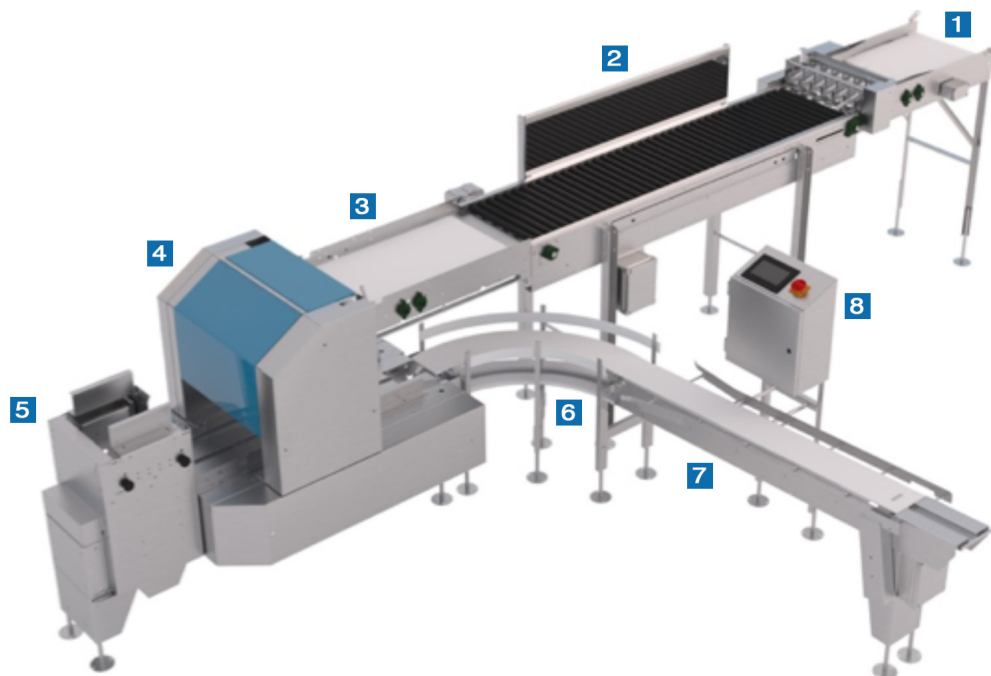
■ GP ONE Grader packer standard – 36.000 Egg / Hour



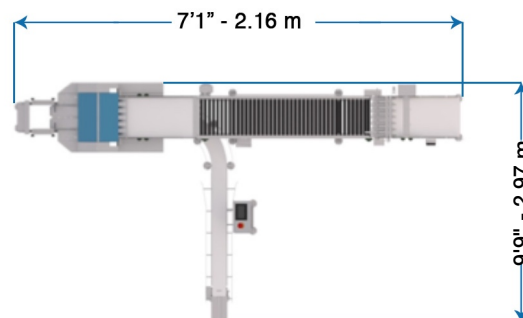
■ GP ONE with 90 Degree Take Away – 36.000 Egg / Hour



■ GP ONE With Candler and 90 Degree Take Away – 36.000 Eggs / Hour



- 1 – Accumulador / Orientor
- 2 – Lighted Egg Candler
- 3 – Reservoir Table
- 4 – Packer Head
- 5 – Packaging Denester for multiple sizes
- 6 – Belted Curve to handle 12 /18 egg cartons
- 7 – Take Away Conveyor
- 8 – Control Box



- Capacity: 36,000 eggs per hour.
- Stainless steel construction.
- 3 step packer head for better handling and treatment of the egg.
- Right and left hand takeaway conveyors according to you need.
- Equipped with servo motors for easy programming of advances for different packaging sizes.
- Easy maintenance, cleaning and lubrication.
- Limited use of molded plastic parts. Strong and long lasting construction.
- Low usage of consumable reposition spare parts.
- Latest Mitsubishi technology.
- Two year parts warranty. Not Including consumables
- Planning, installation and training available.
- 240V, 50/60 HZ, 1 PH, 5 Ampers.
- Low use of consumable reposition spare parts.